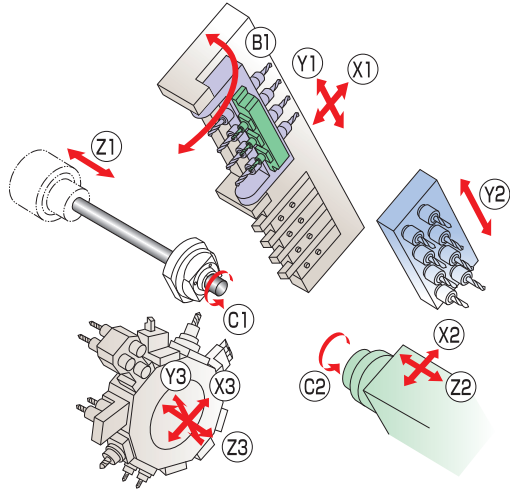


Advantages & Features

NEW! With the SX-38 we have put several proven technologies under the hood. The flexible B-axis sits stable on the tool post and ensures the highest precision. The turret is designed with 10 stations for highly complex components and can be used on front and back side. The flexible back working on the turret or back block is of course possible without restriction of the front side machining.



SX

38



Technical details

• CNC control system	Fanuc 31i-B5
• Capacity coolant tank	375 liter
• Dimensions (WxDxH) in mm	2955 x 1430 x 1975
• Weight	4150kg
• Power consumption	9.5kVA
• Rapid feed rate	30m/min
	(X1, X2, X3, Y1, Z1, Z2, Z3)

FRONT SIDE

Number of axes	12
Main spindle	C1 / Z1 axis
Tool post	B1 / X1 / Y1 axis
Turret	X3 / Y3 / Z3 axis
max. Machining diameter	Ø 38mm
max. Headstock stroke (sliding/fixed headstock)	95mm / 320mm
Drive power	7.5kW / 11kW
max. Speed	7'000 rpm

Tools Gang tool post

Turning tools	3 (□16mm) 1 (□20mm)
Crossworking tools B-Achse	4 (ER20) Front side 4 (ER16) Back side
max. Crossworking drive power	2.2kW / 3.0kW
max. Speed Crossworking tools	5.000 rpm

Werkzeuge Revolver

Number of stations (power-driven)	10
max. Drive power	2.7kW / 4.0kW
max. Cross working speed	5'700 rpm

BACK SIDE

Number of axes	4
Sub spindle	C2 / X2 / Z2 axis
Axis verticalHuber	Y2
max. Gripping diameter	Ø 38mm
max. Sub spindle drive power	7.5kW / 11.0kW
max. Sub spindle speed	7'000 rpm
Power drive (standard) Tool station	8 (8 power-driven)
max. Backworking speed	5'000 rpm
max. Backworking drive power	1.2kW / 2.2kW